

Aspen Batch Process Developer

Innovative recipe-based modeling technology for the batch process industries

Aspen Batch Process Developer is a recipe-based modeling technology used for developing batch processes and generating required documentation—from early route selection to full-scale manufacturing. It facilitates sharing of information across the company by providing a standard approach for creating and managing process information throughout the development workflow.

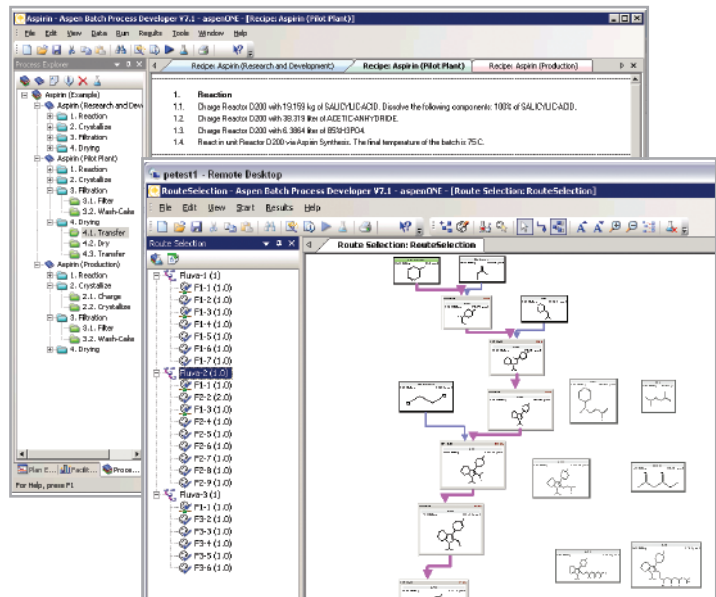
||||||| Optimizing the Process Development Workflow

The batch industries are challenged to efficiently accelerate new product development while containing costs. As a process evolves from R&D into manufacturing, different work groups use different process representations to support their decision-making. As a result, communication between these groups is fragmented, the important assumptions and observations stay hidden, and the final process is more costly and less robust.

Aspen Batch Process Developer enables control, efficiency, and collaboration in the batch process development workflow. Scientists are able to design and optimize batch plants and accelerate time-to-market. From route selection to scale-up technology transfer, *Aspen Batch Process Developer* increases productivity, ensures error-free communication, and improves bottom-line profitability.

Reported Benefits

- **Increase Productivity**
 - Provide consistency in assumptions, data, documentation, and results
 - Enter data once for a wide variety of calculations and reports throughout the lifecycle of a project
 - Accelerate go/no-go decisions
 - Reduce lab and pilot costs
 - Bring people up-to-speed more quickly
- **Reduce Capital and Operating Costs**
 - Reduce over-design
 - Increase yield, purity, and product recovery
 - Reduce energy use, excess solvent usage and wastes
 - Improve asset utilization



Aspen Batch Process Developer documents the process recipe and automates route selection, enabling companies to accelerate R&D and process development.

||||||| Key Technical Features

- **In the laboratory:** Compare process alternatives, evaluate make-versus-buy decisions and select synthetic routes for new molecules. With minimal process information, conduct mass balances and obtain quick cost estimates.
- **In early process development:** Screen new processes more quickly and efficiently during the early stages of process definition to identify those that are most cost-effective.
- **In the pilot plant:** Reduce time-to-market for process scale-up and maximize return on assets for existing pilot plant facilities.
- **In process engineering:** Enable better planning of capacity expansions.
- **In production:** Eliminate bottlenecks, investigate capacity expansions, simulate single- or multi-product campaigns, and calculate in-plant emission profiles. Validate the process model and use the validated model to troubleshoot problem batches. Export batch recipes to Aspen Production Execution Manager.

||||||| Added Value of Integration

Aspen Batch Process Developer is tightly integrated with other aspenONE® solutions:

- **Aspen Properties®**—The industry standard for thermophysical properties modeling throughout the product and process lifecycle
- **Aspen Process Manual™**—A collection of chemical engineering knowledge and information
- **Aspen Process Tools™**—A collection of software programs focused on solids and separations processes

||||||| aspenONE Process Engineering

Aspen Batch Process Developer is a key component of aspenONE Process Engineering for the process industries. aspenONE Process Engineering is an integrated lifecycle solution – from conceptual design through to plant start-up and operations support – enabling you to model, build, and operate safer, competitive, and more reliable process plants. Companies are able to reduce capital and operating costs, increase engineering efficiency and quality, and accelerate time-to-market with payback in months instead of years.

||||||| About AspenTech

AspenTech is a leading supplier of software that optimizes process manufacturing—including oil and gas, petroleum, chemicals, pharmaceuticals and other industries that manufacture and produce products from a chemical process. With integrated aspenONE solutions, process manufacturers can implement best practices for optimizing their engineering, manufacturing and supply chain operations. As a result, AspenTech customers are better able to increase capacity, improve margins, reduce costs and become more energy efficient. To see how the world's leading process manufacturers rely on AspenTech to achieve their operational excellence goals, visit www.aspentech.com.



Worldwide Headquarters

Aspen Technology, Inc.
200 Wheeler Road
Burlington, MA 01803
phone: +1-781-221-6400
fax: +1-781-221-6410
info@aspentech.com

EMEA Headquarters

AspenTech Ltd.
C1, Reading Int'l Business Park
Basingstoke Road
Reading UK
RG2 6DT
phone: +44-(0)-1189-226400
fax: +44-(0)-1189-226401
ATE_info@aspentech.com

APAC Headquarters

AspenTech - Shanghai
3rd Floor, North Wing
Zhe Da Wang Xin Building
2966 Jin Ke Road
Zhangjiang High-Tech Zone
Pudong, Shanghai
201203, China
phone: +86-21-5137-5000
fax: +86-21-5137-5100
apac_marketing@aspentech.com